

## Summary of Strengths and Weaknesses from Map Exercise

No.	Category	Strengths
14	Culture	Cultural opportunities
36	Culture	Asset - historical
37	Culture	History of the area
43	Culture	Theater Performing Arts
4	Education	Scholarships available to DCS students
10	Education	Safe, healthy schools
13	Education	School
50	Education	School
76	Industry	Norbord Industries
3	Infrastructure	17/86
47	Natural Resources	Lots of Natural resources
78	Natural Resources	Wood and stone
1	Organizations	Deposit Foundation & RHS
7	Organizations	Food pantry
8	Organizations	Deposit Free Library
38	Organizations	Religious communities working together
44	Organizations	Strong informal supports & volunteer
71	Organizations	Strong volunteer groups
72	Organizations	Churches (not big enough for groups)
85	Organizations	Police Department
89	Organizations	Lots of volunteer organizations
11	Outdoor Recreation	Oquaga Creek State Park
12	Outdoor Recreation	"The great outdoors"
39	Outdoor Recreation	River
42	Outdoor Recreation	Oquaga Creek State Park
49	Outdoor Recreation	Hunting and fishing
74	Outdoor Recreation	State lands provides recreation
75	Outdoor Recreation	River fishing industry
79	Outdoor Recreation	Hunting/trapping
80	Outdoor Recreation	Fishing/wild life
73	Seniors	Active senior citizens in community
N/A	Seniors	North Sanford social activities
15	Youth	Youth of community
5	Youth	Community sports for kids
6	Youth	Community sports for kids
9	Youth	Scouting - Boy & Girl
48	Youth	Childrens' Center
55	Youth	DFRG starting

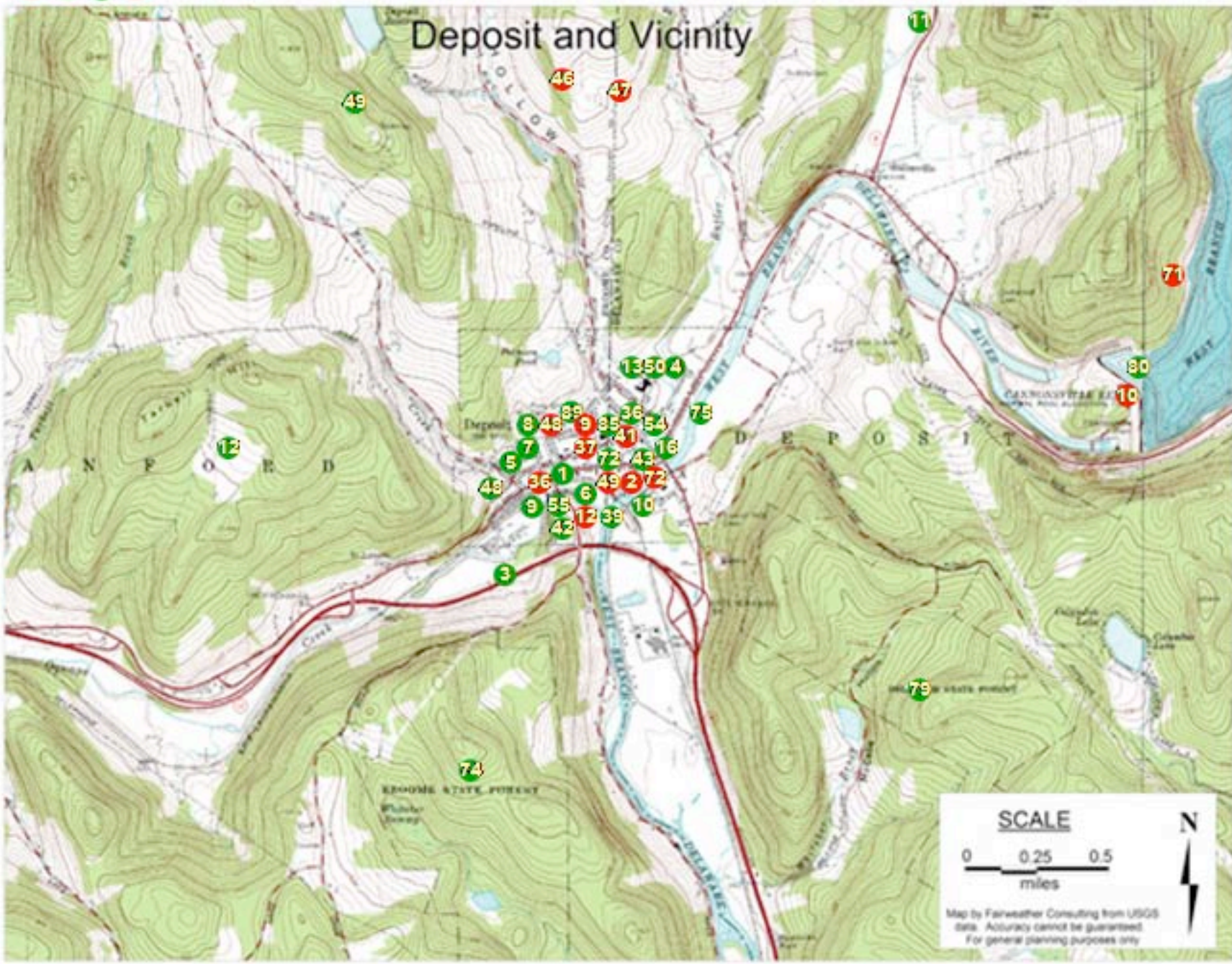
No.	Category	Weaknesses
39	Attitude	Attitude - Alcoholism/welfare mentality
48	Attitude	Fractured community goals.
36	Economy	Downtown "streetscape"
73	Economy	Not enough businesses.
N/A	Economy	No new industries - needed for growth
N/A	Economy	Commuting distance.
N/A	Economy	No shopping/clothing or goods
44	Emergency needs	Emergency services poor
85	Emergency needs	Emergency response time, members
2	Infrastructure	Sewer/water needs to be updated.
49	Infrastructure	Parking downtown.
50	Infrastructure	Public transportation/taxi service.
10	NYC	NYS should pay fair share of tax
11	Organizations	Lack of involvement by community
13	Organizations	Need more inter-county involvement
43	Organizations	Lack of trust by Village government
45	Organizations	Police Department - lack of trust
71	Outdoor recreation	No reservoir trail for cyclists, hikers
72	Outdoor recreation	Lack of waterfront access.
9	Senior needs	Social isolation for Seniors.
37	Senior needs	Inadequate Senior Center
42	Senior needs	Inadequate Senior Center
51	Senior needs	Inadequate Senior Center
55	Senior needs	Assisted Senior housing.
76	Senior needs	Senior needs in rural area - NorthSanford
N/A	Senior needs	Lack of housing for Seniors
N/A	Senior needs	Senior Center/Community Center lacking
40	Senior/youth	No Community Center
12	Youth needs	No youth non-sports activities

1 2 37 76

# Deposit and Vicinity

43  
44  
45  
46  
47  
48  
49  
50  
51  
52

76  
77  
78  
79  
80  
81  
82  
83  
84  
85



**SCALE**

0 0.25 0.5  
miles

Map by Fairweather Consulting from USGS data. Accuracy cannot be guaranteed. For general planning purposes only.