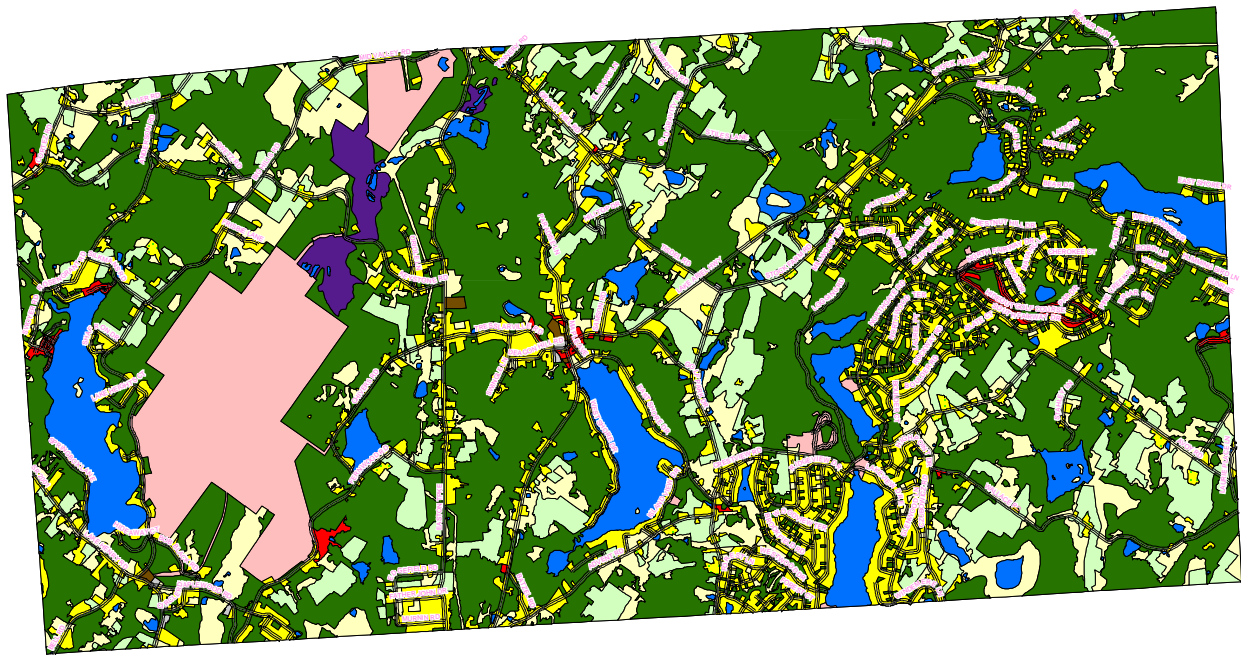
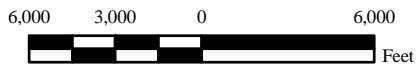


# Lake Township Land Use/Land Cover Comparison



- |               |                        |                   |
|---------------|------------------------|-------------------|
| Roads         | Water                  | Commercial        |
| Cropland      | Residential            | Transportation    |
| Farmsteads    | Religious              | Mining/Extraction |
| Pasture/Brush | Government/Institution |                   |
| Forest        | Recreational           |                   |



This project was funded in part by the Wayne County Commissioners along with a grant award from the Pennsylvania Department of Community & Economic Development (DCED).

The source of the data was 1997 aerial photography taken for the Wayne County 911 project and updated with 2002 assessment records with Township Officials input.

3	Lake Township 2005 Land Use/Land Cover
	<b>THE LAKE REGION PLAN</b> Including the municipalities of Hawley Borough, Lake, Palmyra, and Paupack Townships Wayne County, Pennsylvania
	Wayne County Department of Planning 925 Court Street Honesdale, PA 18431 (570) 253-5970 www.co.wayne.pa.us August, 2007